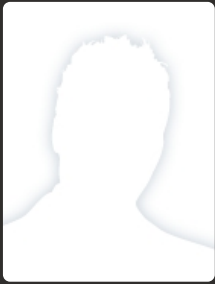


RSI-GB



50 years old  
Driving License  
France

## CONTACT

✉ stephane.leullier@gmail.com

☎ 06 08 65 34 10

## Chief Information Officer

Shamir France - Since August 2013 - Full-time - Collegien - France

- Team Management (5 persons) reporting to the General Manager
- Member of the executive Committee
- Definition of the IT strategy in coordination with the Group's HQ
- Building and management of the IT budget (400 €/year)
- Project Management

## Information Systems Manager

GROUPE EPC - Since March 2009 - Full-time - Paris - France



- Team management (3 persons) reporting to the Group CFO
- Management of the infrastructure, network and phone system for the Group
- Building and management of the IT budget (430 k€/year)
- Relationship with external suppliers and consultants, negotiation of global agreements
- Administration of 25 Windows 2003/ 2008 servers either remotely or on site (including Exchange 2003 and SQL 2008)
- Daily PC support for 120 users workstations, XP or Seven, located on different remote sites in France

## Network and System administrator

GROUPE EPC - September 2006 to March 2009 - Full-time - Paris - France



- Network structure administration and extension
- Servers management (12) and headquarter workstations (40)
- Video conferencing system on Lifesize technology (3 sites)
- Definition of group standard for the same technology (5 countries)
- Group IT standards definition (internet bandwidth, encoding, security)

## IT Manager for France – Spain – Portugal – Belgium

World Courier - August 2002 to August 2006 - Full-time - Clichy - France



- 130 workstation management, 11 servers (Windows, Exchange, Unix, SQL, Citrix)
- Member of an international level 2 support team, 140 offices around the world
- Organization for different european headquarters moves without any service shut down

## SKILLS

### Project Management

- ERP Sage X3
- Disaster Recovery Plan design and setup
- CRM Microsoft Dynamics

### Phone system

- Mobility tools : Blackberry, RDP, VPN, GPRS, 3G, RTC, RSA, OWA
- Mobile fleet management, relationship with providers, cost optimization
- PABX Management -Siemens,

### Management

- Team management
- Project management
- Costs analysis

### Specific Skills

- Server virtualization
- IPSEC VPN with Sonicwall firewalls

- ERP Sage X3



---

**Blackberry BES 5.0**  
**ORANGE BUSINESS SERVICE**  
July 2012

**Vmware Vsphere 4.1**  
**ORSYS**  
February 2012

**Windows server 2008 / AD 2008**  
**ORSYS**  
December 2010

**Windows Server 2008 - advanced administration**  
**ATFOR**  
November 2009

**Vmware Virtual Infrastructure 3**  
**ORSYS**  
December 2008

**Microsoft Exchange 2003**  
**BULL**  
July 2005

**Windows Server 2003 / AD 2003**  
**LEARNING TREE**  
January 2005